

advancing stewardship

estate planning and other news



Volume 4, Issue 2

December, 2000

Stewardship Update

Willard VanderPloeg

It's been some time since we shared the progress on our new stewardship education program. We thought the close of this year and the promise of a new one provided a good opportunity to do so.

The stewardship committee has been meeting regularly throughout the year. We are all excited about the possibilities for the program and are working hard to bring it to a successful launch.

Members of the committee are:

From the CRC - Claire Elgersma, Ben Vandezande,
Henry Wildeboer,
From CSS - Henry Contant, Greta Luimes
Martin Oldengarm,
CSS Staff - Henry Eygenraam, Willard
VanderPloeg

This fall, CSS advertised the Stewardship Coordinator position on two occasions and committee members backed that up with a lot of personal networking. Though several excellent candidates were interviewed – some at considerable length, we still did not feel that we had the right person for the position.

During our interview process, it became evident that the model we envisioned for the program raised some concerns amongst both interviewees and potential applicants. Both the national scale of our program and how it was to be delivered would place a heavy burden on the staff person. In November, the committee reviewed how the program will start, and be delivered on an ongoing basis.

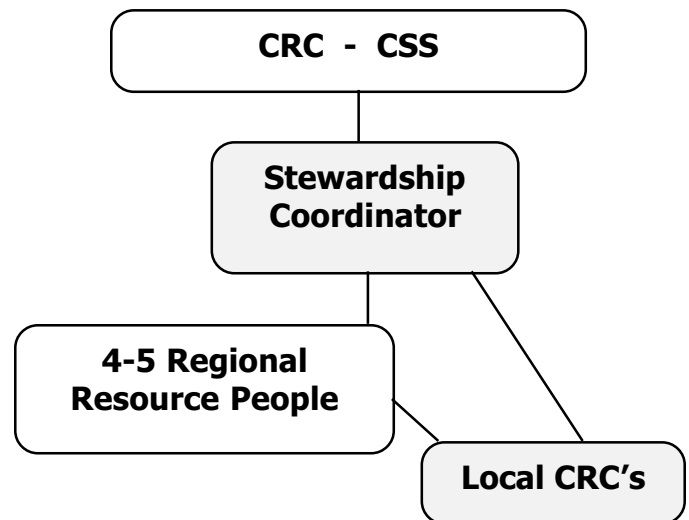
The Adjustments

The stewardship program will start with an Ontario setting. The Co-ordinator will develop the concept

and start to work with one regional resource person in Ontario and with one in Western Canada. From there it will branch out to possibly 4-5 such persons in various parts of the country. The early emphasis on developing a network of people is perhaps the most significant adjustment being made to the program delivery. We feel this will ease the travel demands placed on the Co-ordinator and give CSS and the committee, a closer measure of involvement with the program as it develops.

The Co-ordinator will consult with the churches and assist with stewardship programs while at the same time developing and training the regional resource people. Ultimately, we envision that the Stewardship Coordinator will be a "team leader" to four or five regional trainers. A similar model has proven very successful for Diaconal ministries across Canada.

Here is the structure we have in mind:



During the next few months, we'll be continuing our search for a Program Co-ordinator hoping that these changes will lead the right person to us. Interested in learning more? Contact CSS or see our website at www.cssservices.ca/stewardship.

Winter/Spring 2001 CSS Travel Dates

Alberta:	Feb. 13 - 22, Apr. 17 - 26
British Columbia	Feb. 5 - 15, Apr. 2 - 11
Manitoba	May 1 - 8
Eastern Canada	May 7 - 18
Ontario	- throughout the year - call for details!

Merry Christmas!

*We wish everyone a blessed Christmas
as we celebrate the birth of our Saviour.*

*From the staff at Christian
Stewardship Services;*

Henry Eygenraam
Willard VanderPloeg
Anita Horlings
Jeannie Luimes



advancing stewardship

The information provided comes from various sources believed to be reliable. Accuracy can not always be guaranteed. It is not intended to replace professional advice. Consult our staff or your other professional advisors to determine if the information applies to your particular circumstances. This newsletter is copyright but may be freely used in appropriate ways by sponsor organizations of CSS.

Christian Stewardship Services

315 - 600 Alden Road, Markham, Ontario L3R 0E7

Toll-free, Canada: 1-800-267-8890
Phone: (905) 947-9262, (416) 410-5719
Fax: (905) 947-9263
Email: admin@cssservices.ca
Website: www.cssservices.ca

Henry Eygenraam, CFP, CLU, CH.F.C.
Executive Director

Willard VanderPloeg, BCS
Representative & Editor



Moneywise Meditation

How Much to our Children?

by John H. Rudy

We are greatly influenced by tradition, especially when it comes to our estates. Too often we simply give everything to our children, without deciding what they need and how much will be helpful. Sometimes too much money becomes destructive. Sometimes it's a curse rather than a blessing.

I am not suggesting that we disinherit our own children. Of course not. We have a divine responsibility to help them any way we can: when they're growing up, when they go to college, when they buy a house, when they go into business or farming.

But what do our children need when we die, when our Wills become effective, when they are already fifty or sixty years old? What about the overwhelming needs of all the other children of the world?

When I talk with parents about their estate planning, they often tell me how well their children are doing. Sometimes the children are making more money than the parents. My response is usually this: Great! I'm happy to hear how successful your children are. Now, what about all the other children: those who are hungry, those who haven't heard the good news, those who lack educational opportunities, those who are suffering hardships?

We can help meet the needs of these other children by including various church institutions in our Wills. We may want to designate the same share each of our own children get. Or maybe we should designate half of our estates, or even more. It depends upon the size of our estates and the legitimate needs of our own children.

Let's use wealth in ways which enrich others rather than in ways which impoverish our own children.

Moneywise Meditations by John H. Rudy is a collection of meditations on Christian stewardship. A limited number of copies are available for purchase from Christian Stewardship Services. The price for this 160 page book is a modest \$7.50 with mail shipping included. Contact the CSS office to order your copy.

Growing in Giving Conferences Coming to Canada!

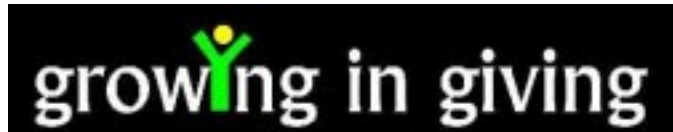
Willard VanderPloeg

Christian Stewardship Services is very pleased to announce that the **Growing in Giving** conferences will be coming to Canada during 2001, featuring Canadian content and speakers!

This past year, the Christian Reformed Church and Firstfruits hosted **Growing in Giving** stewardship conferences across the USA. These vital conferences help church leaders discover and discuss;

- The way you deal with your possessions affects your personal relationship with God.
- What Christian stewardship is.
- The fundamental need for personal financial planning for Christians.
- How the church can model stewardship without seeming self-serving.
- How other churches have implemented successful programs.
- How to implement a self-developed strategy in your church.

Conference fees are very reasonable at \$100 for the first attendee and \$50 for each additional attendee - accomodation included! For commuters, the fees have been set at \$100 for the first attendee and just \$25 for each additional participant.



Growing in Giving Conferences are being partially funded by the CRCNA, in order to encourage participation by many church teams.

Growing in Giving conferences present many opportunities for interaction, reflection and planning as a church-team, so consider sending a team consisting of pastor, elders, deacons, or other leaders from your church! Teams will leave the conference, with a Church Strategy Handbook, ready to customize a stewardship plan for their church.

Conference locations, contacts and dates:

Spring, 2001

Eastern Canada	Tom Luimes	(613) 836-4353
London, Ontario	Ginny Kreeft	(519) 473-0072
Toronto, Ontario	Greg Riedstra	(905) 453-9929

Fall, 2001

Edmonton, AB	Henry Bosch	(780) 423-0456
--------------	-------------	----------------

Spring, 2002

British Columbia	Gary Veeneman	(604) 859-9353
------------------	---------------	----------------

For more information on **Growing in Giving** conferences, contact CSS or check out the conference website at www.growingin giving.org. Watch for further details about the conference in your area.

Request for Information:

mail or fax to:

Christian Stewardship Services 600 Alden Road, Suite 315 Markham, Ontario L3R 0E7 Fax: (905) 947-9263

Please provide the following:

- | | |
|--|---|
| <input type="checkbox"/> More information on the work of CSS | <input type="checkbox"/> Information on Gifts of Securities |
| <input type="checkbox"/> Information on making a Will | <input type="checkbox"/> Information on RRSP/RRIF Gifts |
| <input type="checkbox"/> Have a representative call to arrange a visit | <input type="checkbox"/> Information on Growing in Giving |
| <input type="checkbox"/> Information on Charitable Gift Annuities | |

Name (s) _____

Street _____

City _____ Prov. _____ Postal Code _____

Telephone _____